

WESTWOOD PARK VILLAGES

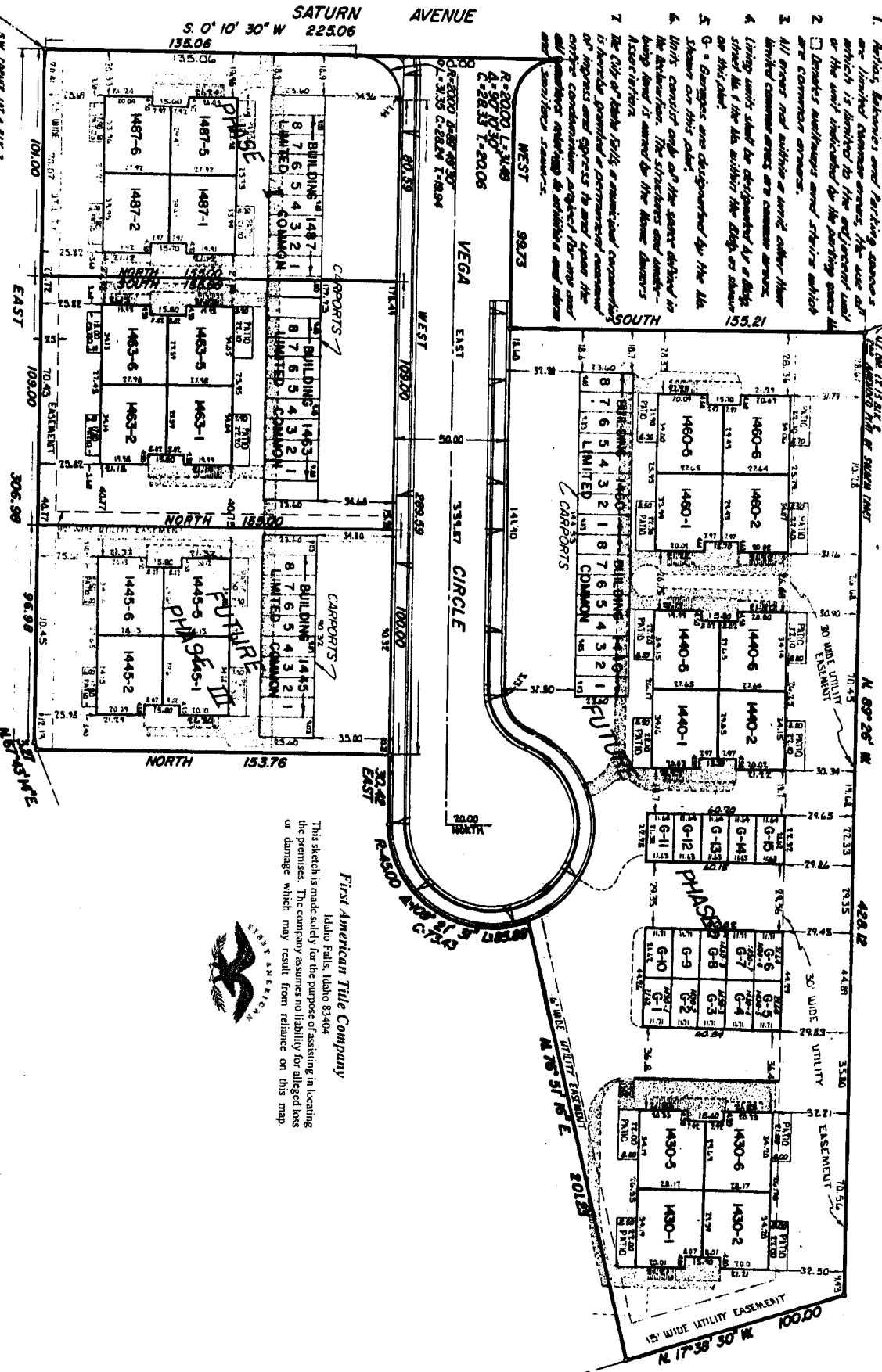
A GORDON GREEN PROJECT

CITY OF IDAHO FALLS, BONNEVILLE COUNTY, IDAHO

FIRST FLOOR PLAN AND GROUNDS

NOTES

1. Parties: Subdivisions and Parking spaces are limited common areas. The use of which is limited to the adjacent land or the unit indicated by the parking space. All are common areas.
2. All areas not within a unit other than limited common areas are common areas.
3. Living units shall be designated by a block letter (A, B, C, D, E, F, G, H, I, J, K, L, M, N, O, P, Q, R, S, T, U, V, W, X, Y, Z) and the lot number.
4. Units cannot only of the same kind in the subdivision. The structures and units being used is owned by the same owner's Association.
5. The City of Idaho will, a residential development is hereby granted a preliminary approval of heights and setbacks to and upon the entire construction project for any and all matters relating to setbacks and other matters.



First American Tile Company
 Idaho Falls, Idaho 83404

This sketch is made solely for the purpose of assisting in locating the premises. The company assumes no liability for alleged loss or damage which may result from reliance on this map.



SEE CORNER FOR A B.C. 2
 FOR AN UNLAWFUL FULL OR PART
 SOUTHERN TRACT

• Boundary Line Ends