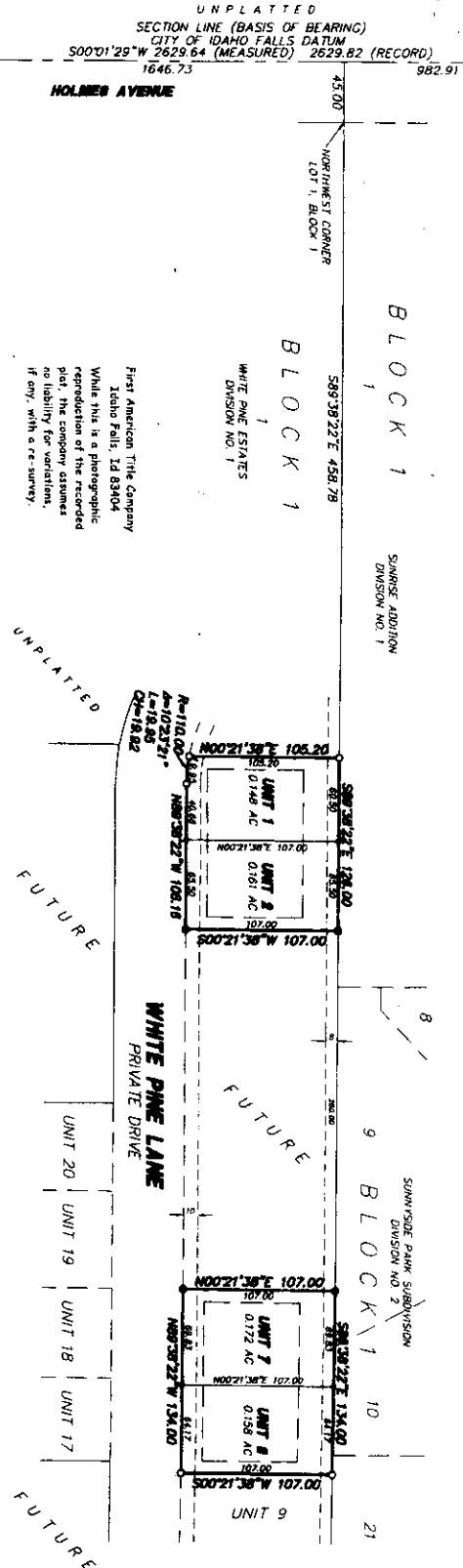


WHITE PINE ESTATES

PHASE 2

PURSUANT TO DAHO CODE TITLE 46, CHAPTER 15

CITY OF IDAHO FALLS, BONNEVILLE COUNTY, IDAHO



First American Title Company
 Idaho Falls, ID 83404
 While this is a photographic
 reproduction of the recorded
 plat, the company assumes
 no liability for variations,
 if any, with a re-survey.

LEGEND & NOTES

- 5/8" x 3/8" Steel Rebar Found with plastic cap stamped L.S.8795
 - 1/2" x 2/4" Steel Rebar Found with plastic cap stamped L.S.8795
 - 5/8" x 3/8" Steel Rebar not with plastic cap stamped L.S.8795
 - 1/2" x 2/4" Steel Rebar not with plastic cap stamped L.S.8795
- Existing utility easements per Record Plat of White Pine Estates, Division No. 1.
- Building footprint
- The photos consist of 4 building units.

Each unit consists of the entire property indicated by the floor boundary lines including the base and all improvements thereon, but are subject to the covenants, conditions, restrictions, and easements set forth in the Declaration for maintenance purposes, etc.

For District 7 Health Department approval, see the White Pine Estates plat, Recorded May 26, 2003 under Instrument No. 1114014

Notes of recording shall be as per Ordinance 100000.

For Ordinance permitting this plat to be on the local law Ordinance of order project.

FOUND ALUMINUM CAP
 N.W. COR. SECTION 32
 T.2N. R.3E.E. B.M.
 CORNER BY L.S. 3842
 INSTR. NO. 1009688

FOUND BRASS CAP
 N.W. COR. SECTION 32
 T.2N. R.3E.E. B.M.
 CORNER BY L.S. 973
 INSTR. NO. 489928