

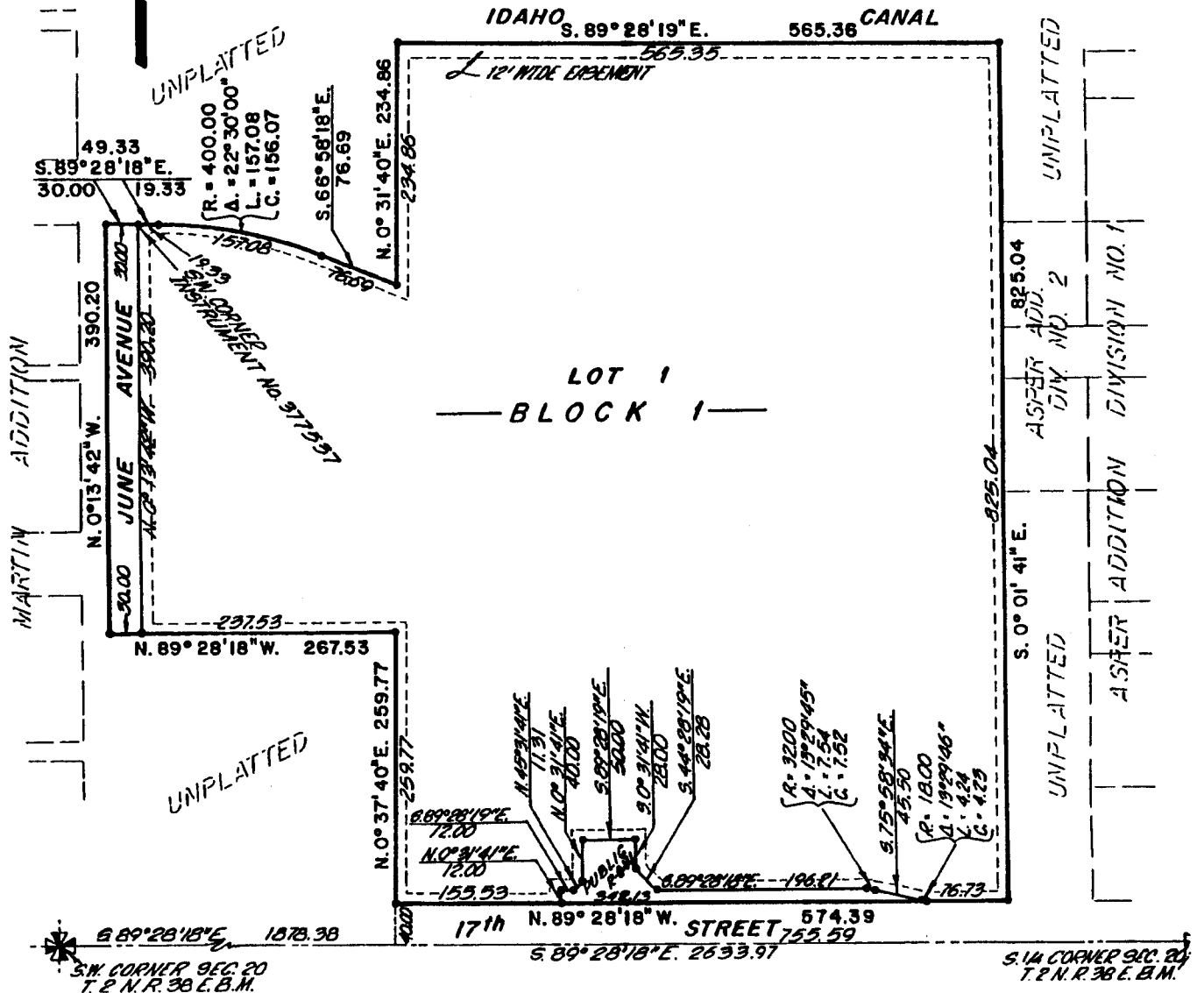
WILLARD-WARR ADDITION DIVISION NO. 1

AN ADDITION TO THE CITY OF IDAHO FALLS, BONNEVILLE COUNTY, IDAHO
A PORTION OF THE SW 1/4 OF SECTION 20, T.2N. R.38 E.B.M.



NOTES

- DENCES FROM ROADS
- UTILITY EASEMENTS 10 FT. WIDE ALONG ALL STREET FRONTS.
- ALL OTHERS 8 FT. WIDE UNLESS OTHERWISE NOTED.



First American Title Company

Idaho Falls, Idaho 83404

This sketch is made solely for the purpose of assisting in locating the premises. The company assumes no liability for alleged loss or damage which may result from reliance on this map.

