

LEGEND & NOTES

- 50' x 30' Steel Roll-up net with plastic cap stamped L.S. 827
- 127' x 24' Steel Roll-up net with plastic cap stamped L.S. 827
- 127' Steel Roll-up net with cap stamped L.S. 827 unless noted otherwise

All other easements are as shown.

Let 2 through 6 each have an individual 1/5 interest in Lot 1 in word flat, FOR FURTHER PROTECTION & IDENTIFICATION

Access onto U.S. Highway No. 26, 31, 191 and onto 25th East is shown in the 30' foot wide Joint Access Easement as shown on the plat.

Let 7 shown on this plat are included in a fishing district and will be assessed for operation and maintenance.

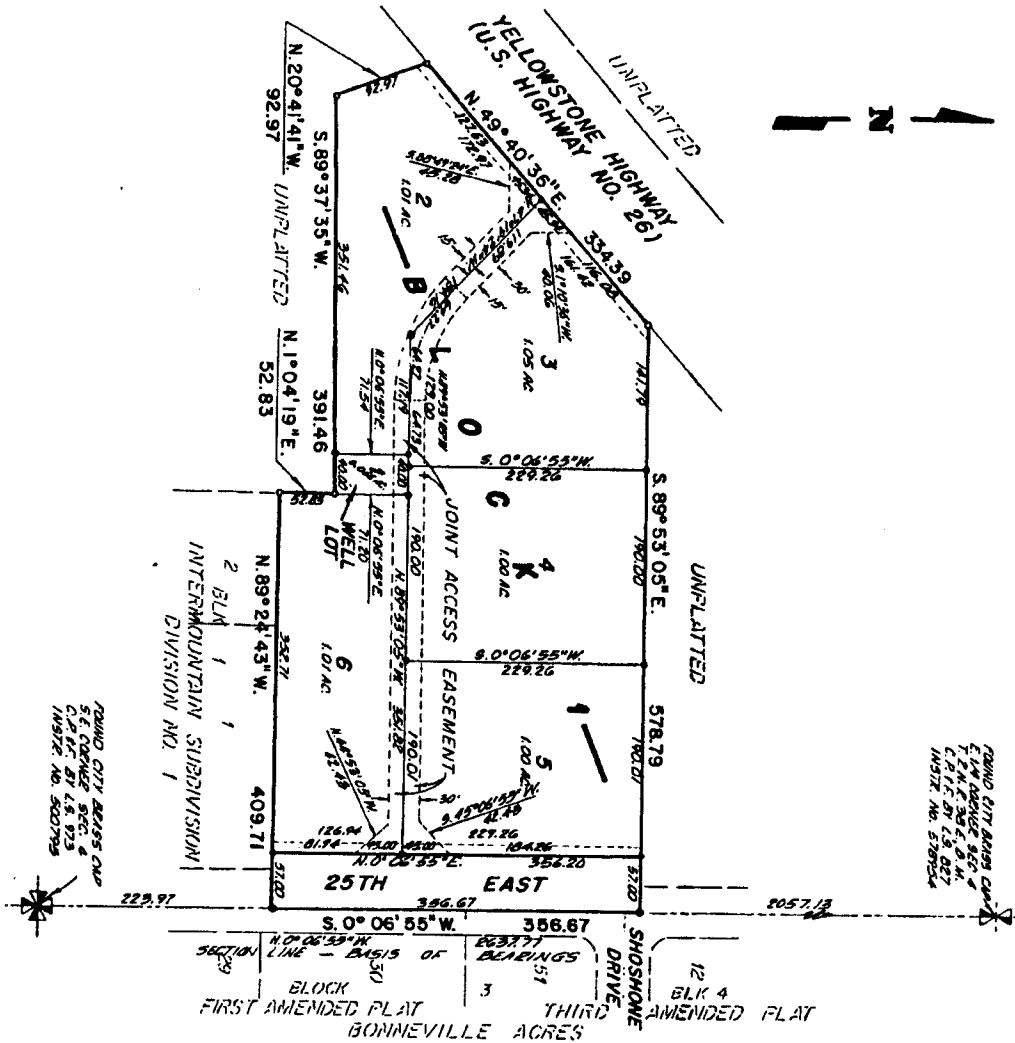
**WILLOW CREEK TOOL SUBDIVISION
DIVISION NO. 1
BONNEVILLE COUNTY, IDAHO
BEING PART OF THE S.E. 1/4 OF SECTION 4, T. 2 N., R. 38 E., B.M.**



First American Tile Company

Idaho Falls, Idaho 83404

This sketch is made solely for the purpose of assisting in locating the premises. The company assumes no liability for alleged loss or damage which may result from reliance on this map.



ROUND CITY BARRIS CND
S.E. CORNER SEC. 4
CHAMP. ON U.S. 26
INSTR. NO. 57075

ROUND CITY BARRIS CND
S.E. CORNER SEC. 4
CHAMP. ON U.S. 26
INSTR. NO. 57075