

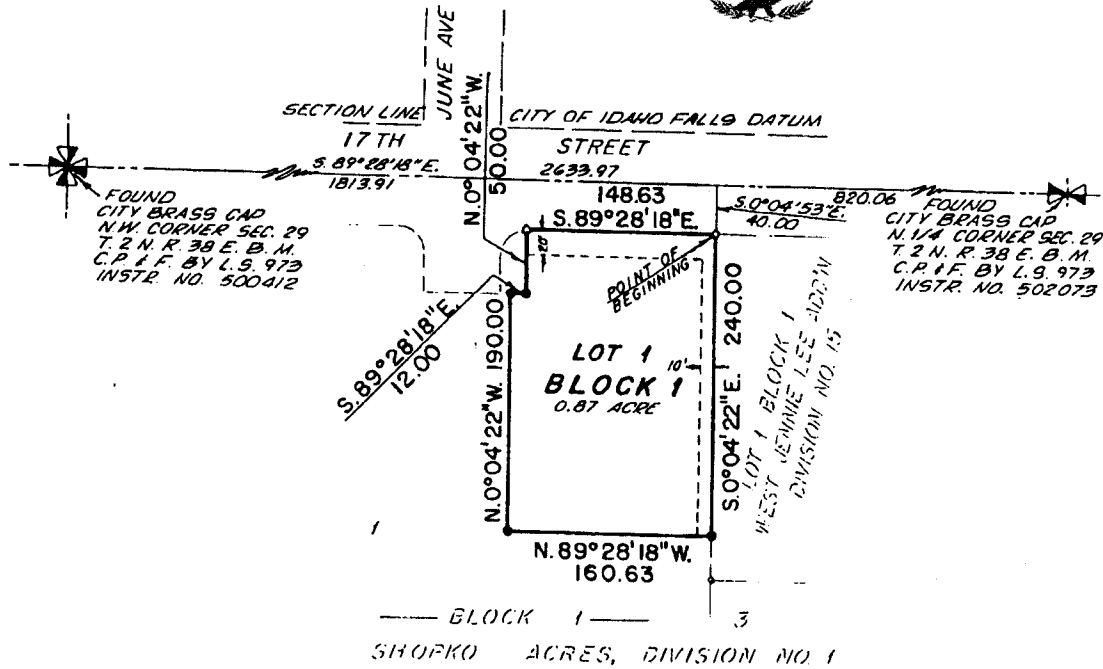
# WINDSOR ADDITION DIVISION NO. 1 AN ADDITION TO THE CITY OF IDAHO FALLS, BONNEVILLE COUNTY, IDAHO

**BEING A REPLAT OF A PART OF LOT 1, BLOCK 1, SHOPKO ACRES, DIVISION NO. 1  
LYING IN THE N.E. 1/4 N.W. 1/4 SECTION 29, T. 2 N., R. 38 E., B. M.**

First American Title Company

Idaho Falls, Idaho 83404

This sketch is made solely for the purpose of assisting in locating the premises. The company assumes no liability for alleged loss or damage which may result from reliance on this map.



### LEGEND

- 5/8" x 30" Steel Re-bar set with plastic cap stamped L.S. 827
- ~~● 1/2" Steel Re-bar set with plastic cap stamped L.S. 827~~
- 1/2" Steel Re-bar found with caps stamped L.S. 827
- Easements: widths as shown
- △ CHISELED X IN CONCRETE WALK