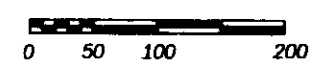
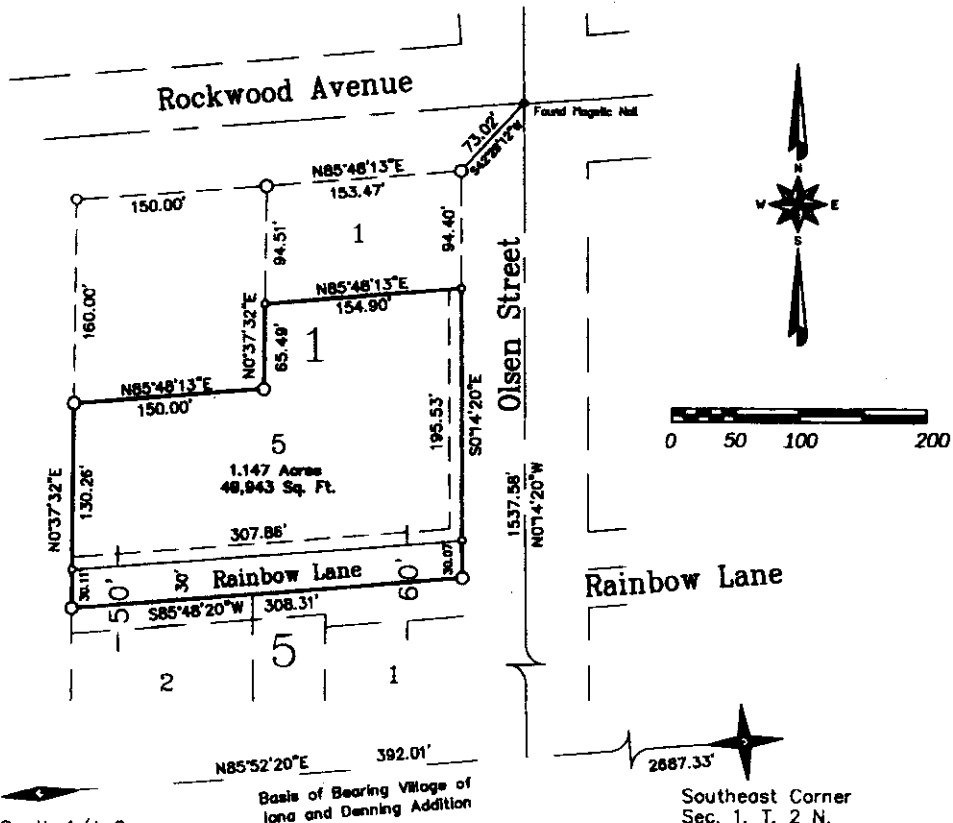


FIRST AMENDED PLAT OF WOFFINDEN ADDITION

TO THE CITY OF IONA, BONNEVILLE COUNTY, IDAHO
BEING A REPLAT OF LOTS 2, 3, AND 4, BLOCK 1,
AND RAINBOW LANE, WOFFINDEN ADDITION
PART OF THE S.E. 1/4 OF SECTION 1, T. 2 N., R. 38 E.B.M.



South 1/4 Corner
Sec. 1, T. 2 N.
R. 38 E.B.M.
(Inst. No. 975641)

Southeast Corner
Sec. 1, T. 2 N.
R. 38 E.B.M.
(Inst. No. 587381)

First American Title Company
Idaho Falls, Id 83404

While this is a photographic
reproduction of the recorded
plat, the company assumes
no liability for variations,
if any, with a re-survey.

NOTES

- Indicates a 1/2" x 24" iron rod placed with a yellow plastic cap marked L.S. 722.
- Indicates a 1/2" x 24" iron rod found with a yellow plastic cap marked L.S. 722.
- Indicates a 5/8" x 30" iron rod placed with a yellow plastic cap marked L.S. 722.
- Indicates a 5/8" x 30" iron rod found with a yellow plastic cap marked L.S. 722.
- a 10' wide utility easement is reserved along the street side of all lots.