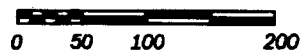
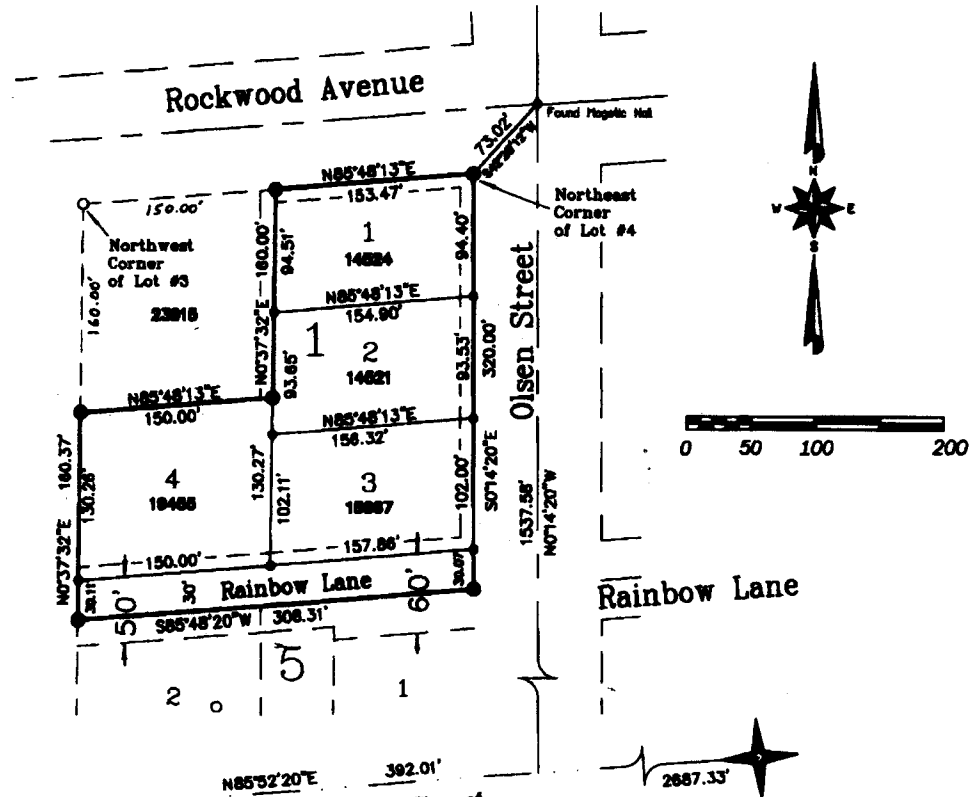


WOFFINDEN ADDITION

TO THE CITY OF IONA, BONNEVILLE COUNTY, IDAHO
 BEING A REPLAT OF A PORTION OF LOTS 3 AND 4,
 BLOCK 5, OF THE VILLAGE OF IONA
 PART OF THE S.E. 1/4 OF SECTION 1, T. 2 N., R. 38 E.B.M.



South 1/4 Corner
 Sec. 1, T. 2 N.
 R. 38 E.B.M.
 (Inst. No. 975641)

Base of Bearing Village of
 Iona and Denning Addition

Southeast Corner
 Sec. 1, T. 2 N.
 R. 38 E.B.M.
 (Inst. No. 587381)

First American Title Company
 Idaho Falls, Idaho 83404
 While this is a photographic
 reproduction of the recorded
 plat, the Company assumes no
 liability for variations,
 if any, with a re-survey.

NOTES

- Indicates a 1/2" x 24" iron rod placed with a yellow plastic cap marked L.S. 722.
- Indicates a 1/2" x 24" iron rod found.
- Indicates a 5/8" x 30" iron rod placed with a yellow plastic cap marked L.S. 722.
- Indicates a 5/8" x 30" iron rod found with no cap.

12348 Indicates lot area in square feet.

--- a 10' wide utility easement is reserved along the street side of all lots.