

WOODLAND HILLS

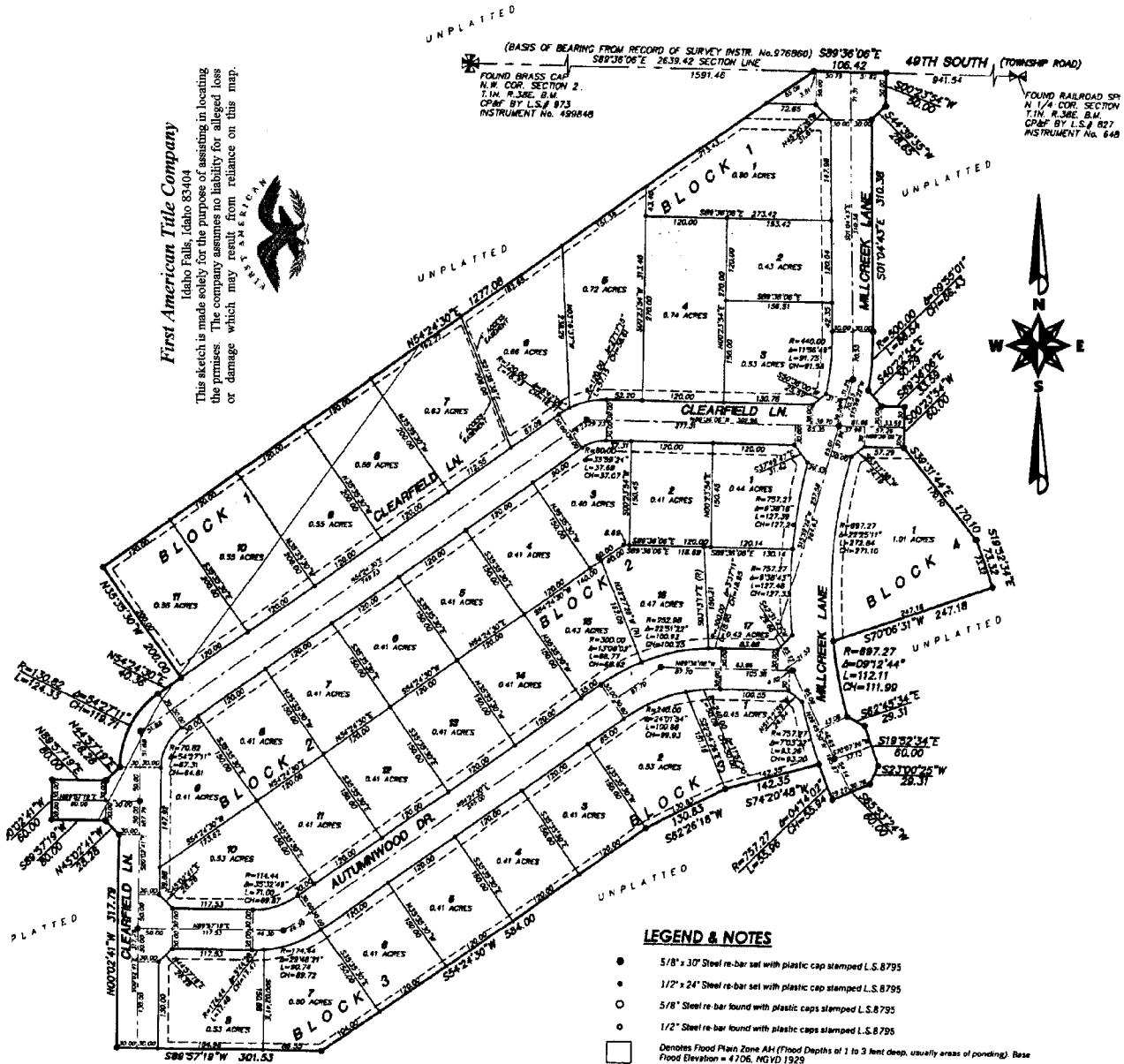
DIVISION NO. 1

AN ADDITION TO THE CITY OF AMMON, BONNEVILLE COUNTY, IDAHO

PART OF THE N.1/2 OF THE N.W. 1/4 SECTION 2 T.1N. R.38E. B.M.

First American Title Company

Idaho Falls, Idaho 83404
This sketch is made solely for the purpose of assisting in locating the premises. The company assumes no liability for alleged loss or damage which may result from reliance on this map.



LEGEND & NOTES

- 5/8" x 30" Steel re-bar set with plastic cap stamped L.S.8795
 - 1/2" x 24" Steel re-bar set with plastic cap stamped L.S.8795
 - 5/8" Steel re-bar found with plastic caps stamped L.S.8795
 - 1/2" Steel re-bar found with plastic caps stamped L.S.8795
- Denotes Flood Plain Zone AH (Flood Depths of 1 to 3 feet deep, usually areas of ponding). Base Flood Elevation = 4706, MVD 1929