

WOODLAND HILLS

DIVISION NO. 2

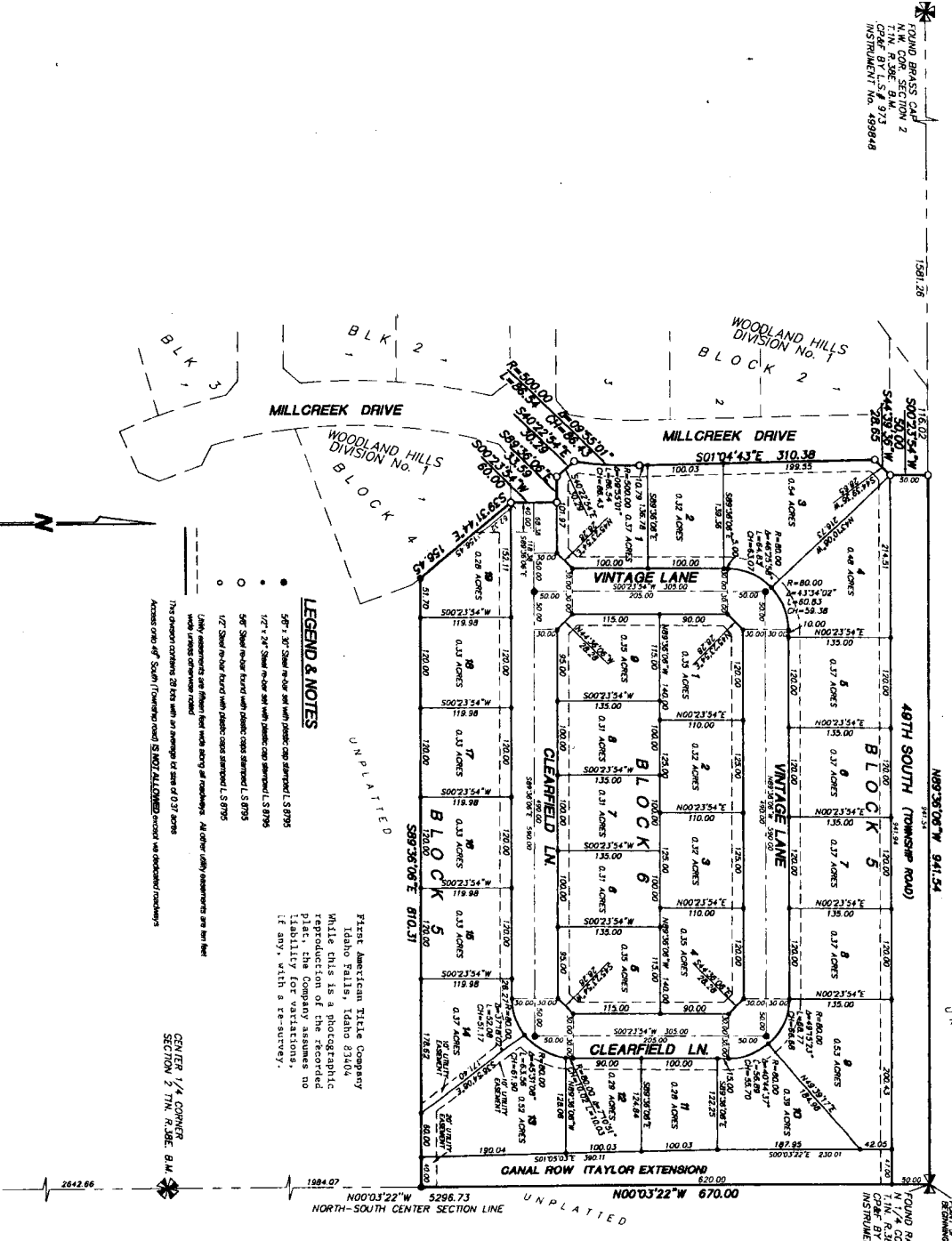
AN ADDITION TO THE CITY OF AMMON, BONNEVILLE COUNTY, IDAHO

PART OF THE N/2 OF THE NW 1/4 SECTION 2, T.1N. R.39E. B.M.

ROUND BRASS 2
T.I.N. R.39E. B.M.
CORN BY L.S.# 973
INSTRUMENT NO. 499848

ROUND BRASS 2
T.I.N. R.39E. B.M.
CORN BY L.S.# 827
INSTRUMENT NO. 648904

(BASIS OF BEARING FROM RECORD OF SURVEY INSTR. NO. 970880)
S89°38'00"E 2638.42 SECTION LINE
N89°38'00"W 941.54



LEGEND & NOTES

- 50' x 30' Show in color with plastic cap stamped L.S. 8795
- 1/2" x 24" Show in color with plastic cap stamped L.S. 8795
- 50' Show in color with plastic cap stamped L.S. 8795
- 1/2" Show in color with plastic cap stamped L.S. 8795

Large monuments are shown from north along all boundaries. All other (left) monuments are per the plat.

The Owner certifies that this plat averages to size of 0.37 acres.

Access only off South (Township road) S.W. 1/4 SECTION 2, T.1N. R.39E. B.M.

First American Title Company
Idaho Falls, Idaho 83404

While this is a photographic reproduction of the recorded plat, the Company assumes no liability for variations, if any, with a re-survey.

CENTER 1/4 CORNER
SECTION 2, T.1N. R.39E. B.M.

