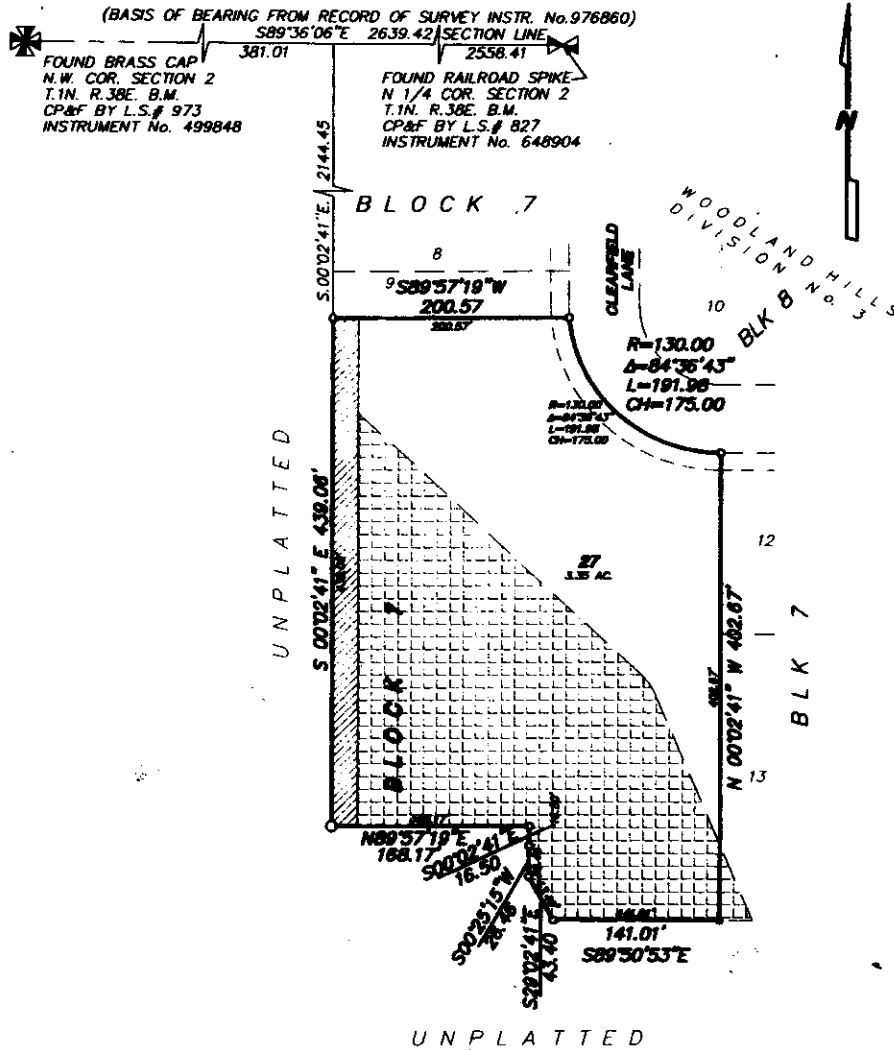


FIRST AMENDED PLAT OF WOODLAND HILLS DIVISION No. 3

AN ADDITION TO THE CITY OF AMMON, BONNEVILLE COUNTY, IDAHO
BEING A REPLAT OF LOTS 10, 11 AND PART OF LOT 13, BLOCK 7 WOODLAND HILLS, DIVISION No. 3
LYING IN THE S.W. 1/4 S.W. 1/4 SECTION 2, T.1N. R.36E. B.M.



First American Title Company
Idaho Falls, Id 83404
While this is a photographic reproduction of the recorded plat, the company assumes no liability for variations, if any, with a re-survey.

LEGEND & NOTES

- 5/8" x 30" Steel re-bar set with plastic cap stamped L.S. 8795
- 1/2" x 24" Steel re-bar set with plastic cap stamped L.S. 8795
- 5/8" Steel re-bar found with plastic caps stamped L.S. 8795
- 1/2" Steel re-bar found with plastic caps stamped L.S. 8795



Denotes Flood Plain Zone AH (Flood Depths of 1 to 3 feet deep, usually areas of ponding). Base Flood Elevation = 4706, NGVD 1929

Denotes Special Flood Hazard Area (Area that has a 1% chance of being flooded in any given year) as per Steven Serr, Bonneville County, Acting for City of Ammon.

Utility easements are fifteen feet wide along all roadways. All other utility easements are ten feet wide unless otherwise noted.