

WOODLAND HILLS

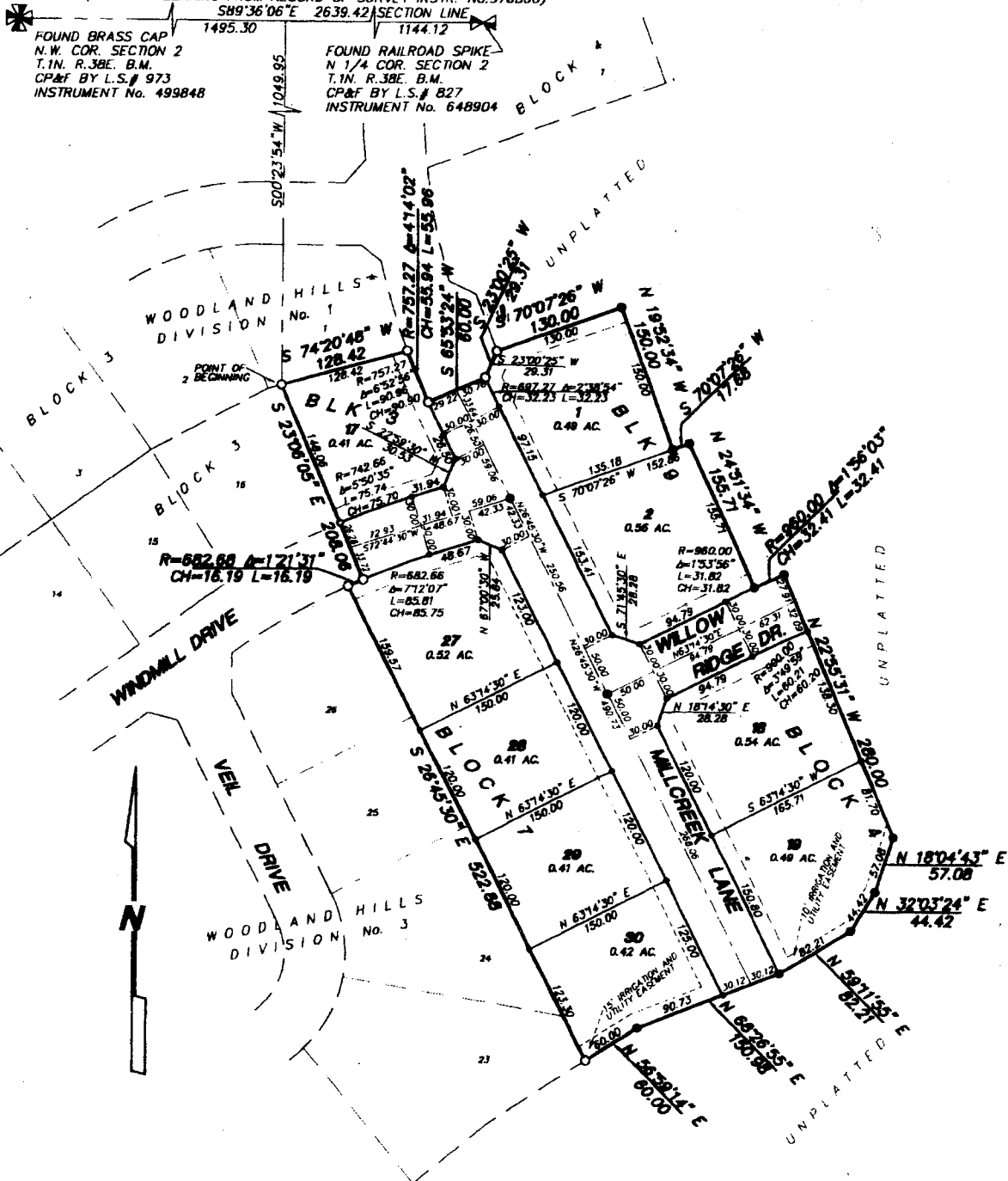
DIVISION NO. 4

AN ADDITION TO THE CITY OF AMMON, BONNEVILLE COUNTY, IDAHO

PART OF THE E. 1/2 OF THE N.W. 1/4 SECTION 2 T.1N. R.38E. B.M.

(BASIS OF BEARING FROM RECORD OF SURVEY INSTR. No. 976860)

S89°36'06" E 2639.42' SECTION LINE



FOUND BRASS CAP
N.W. COR. SECTION 2
T.1N. R.38E. B.M.
CP&F BY L.S.# 973
INSTRUMENT No. 499848

FOUND RAILROAD SPIKE
N 1/4 COR. SECTION 2
T.1N. R.38E. B.M.
CP&F BY L.S.# 827
INSTRUMENT No. 648904

LEGEND & NOTES

- 5/8" x 30" Steel re-bar set with plastic cap stamped L S 8795
- 1/2" x 24" Steel re-bar set with plastic cap stamped L S 8795
- 5/8" Steel re-bar found with plastic caps stamped L S 8795
- 1/2" Steel re-bar found with plastic caps stamped L S 8795

Utility easements are fifteen feet wide along all roadways. All other utility easements are ten feet wide unless otherwise noted.

First American Title Company
Idaho Falls, Idaho 83404
While this is a photographic reproduction of the recorded plat, the Company assumes no liability for variations, if any, with a re-survey.

This division contains 9 lots with an average lot size of 0.47 acres