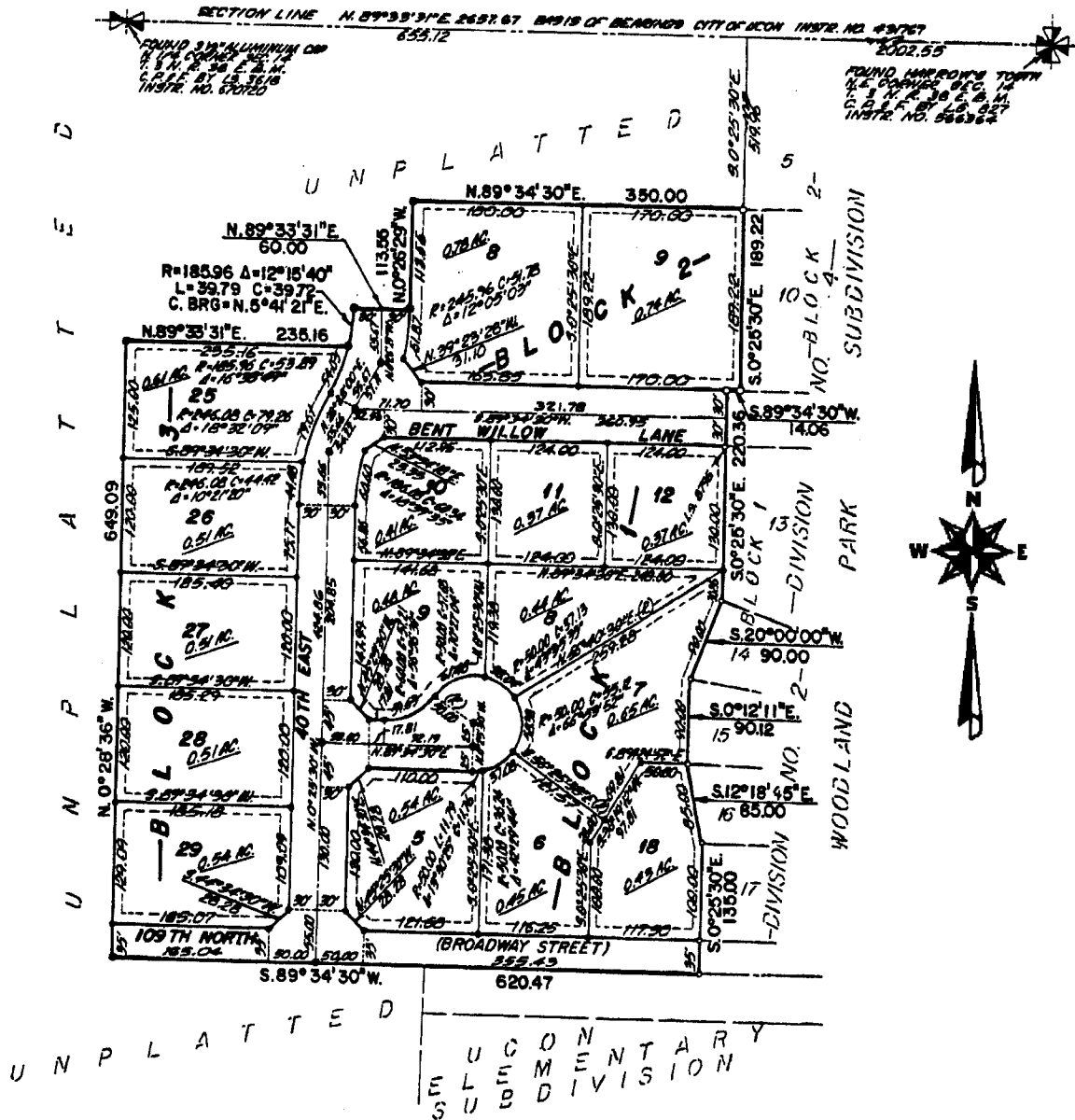


WOODLAND PARK SUBDIVISION, DIVISION NO. 1

AN ADDITION TO THE CITY OF UCON, BONNEVILLE COUNTY, IDAHO

BEING PART OF THE N.E. ¼ OF SECTION 14 T. 3 N. R. 38 E.B.M.



LEGEND & NOTES

- 5/8" x 30" Steel Re-bar set with plastic cap stamped L.S. 8705
 - 1/2" x 24" Steel Re-bar set with plastic cap stamped L.S. 8705
 - 5/8" Steel Re-bar found with caps stamped L.S. 8705
 - 1/2" Steel Re-bar found with caps stamped L.S. 827
- Twelve foot wide Utility Easements are reserved along all frontages except as shown and eight foot wide easements are reserved along all side and rear lot lines except as shown. Also, see note regarding Lot 14-A, Block 3.

First American Title Company

Idaho Falls, Idaho 83404
 This sketch is made solely for the purpose of assisting in locating the premises. The company assumes no liability for alleged loss or damage which may result from reliance on this map.

