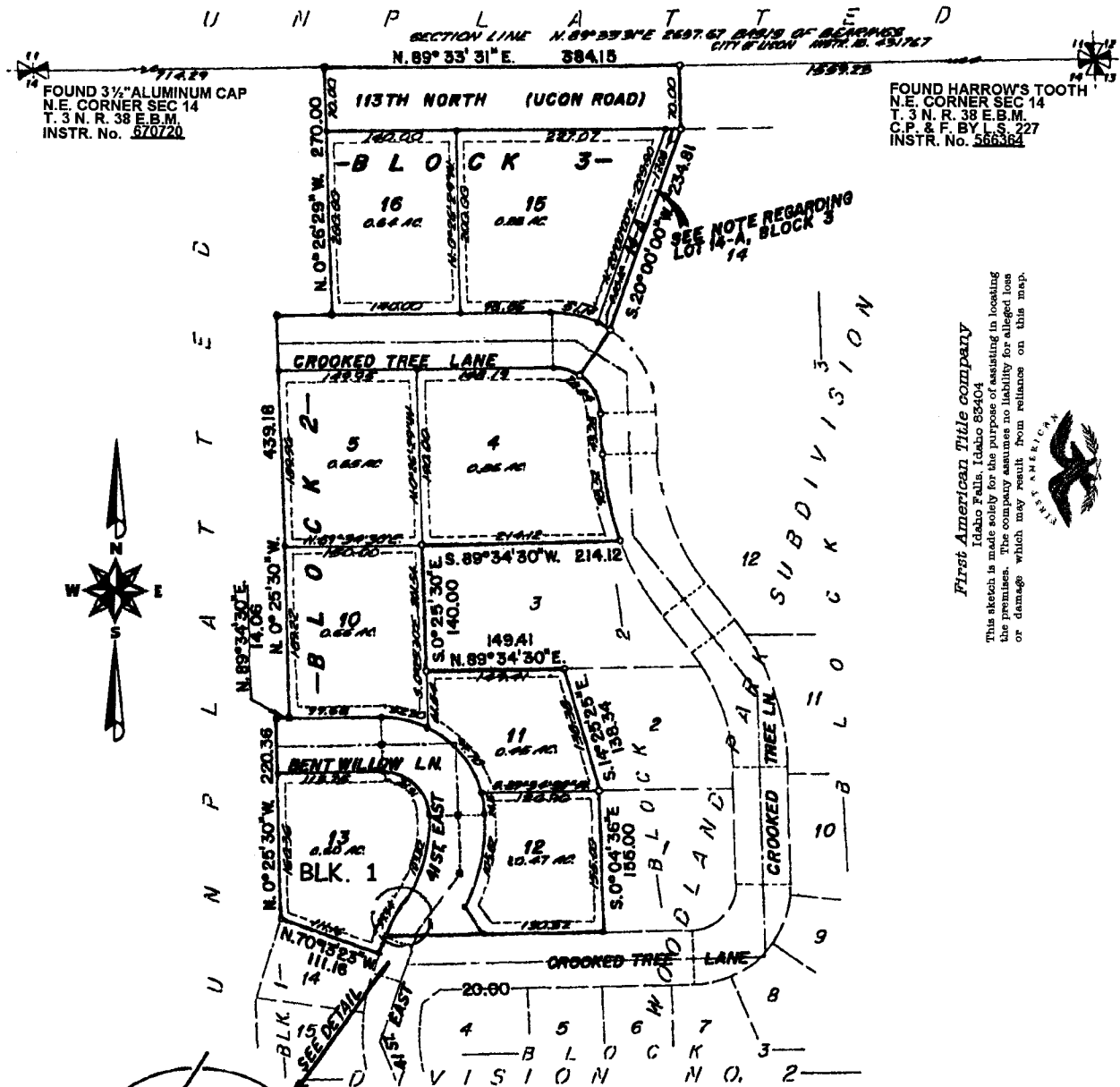


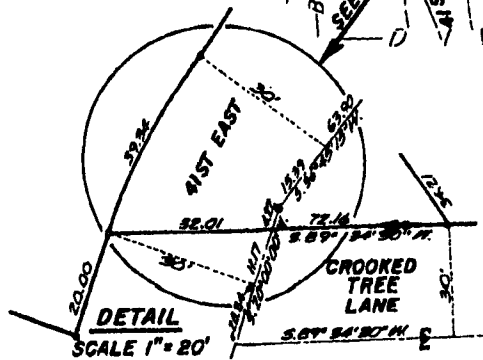
WOODLAND PARK SUBDIVISION, DIVISION NO. 4 AN ADDITION TO THE CITY OF UCON, BONNEVILLE COUNTY, IDAHO BEING PART OF THE N.E. ¼ OF SECTION 14 T. 3 N. R. 38 E.B.M.



FOUND 3/4" ALUMINUM CAP
N.E. CORNER SEC 14
T. 3 N. R. 38 E.B.M.
INSTR. No. 670720

FOUND HARROW'S TOOTH
N.E. CORNER SEC 14
T. 3 N. R. 38 E.B.M.
C.P. & F. BY L.S. 227
INSTR. No. 566364

SEE NOTE REGARDING
LOT 14-A, BLOCK 3



First American Title company
Idaho Falls, Idaho 83404
This sketch is made solely for the purpose of assisting in locating the premises. The company assumes no liability for alleged loss or damage which may result from reliance on this map.



LEGEND & NOTES

- 3/8" x 30" Steel Re-bar set with plastic cap stamped L.S. 8795
- 1/2" x 24" Steel Re-bar set with plastic cap stamped L.S. 8795
- 3/8" Steel Re-bar found with caps stamped L.S. 8795
- 1/2" Steel Re-bar found with caps stamped L.S. 827

Twelve foot wide Utility Easements are reserved along all frontages except as shown and eight foot wide easements are reserved along all side and rear lot lines except as shown. Also, see note regarding Lot 14-A, Block 3.