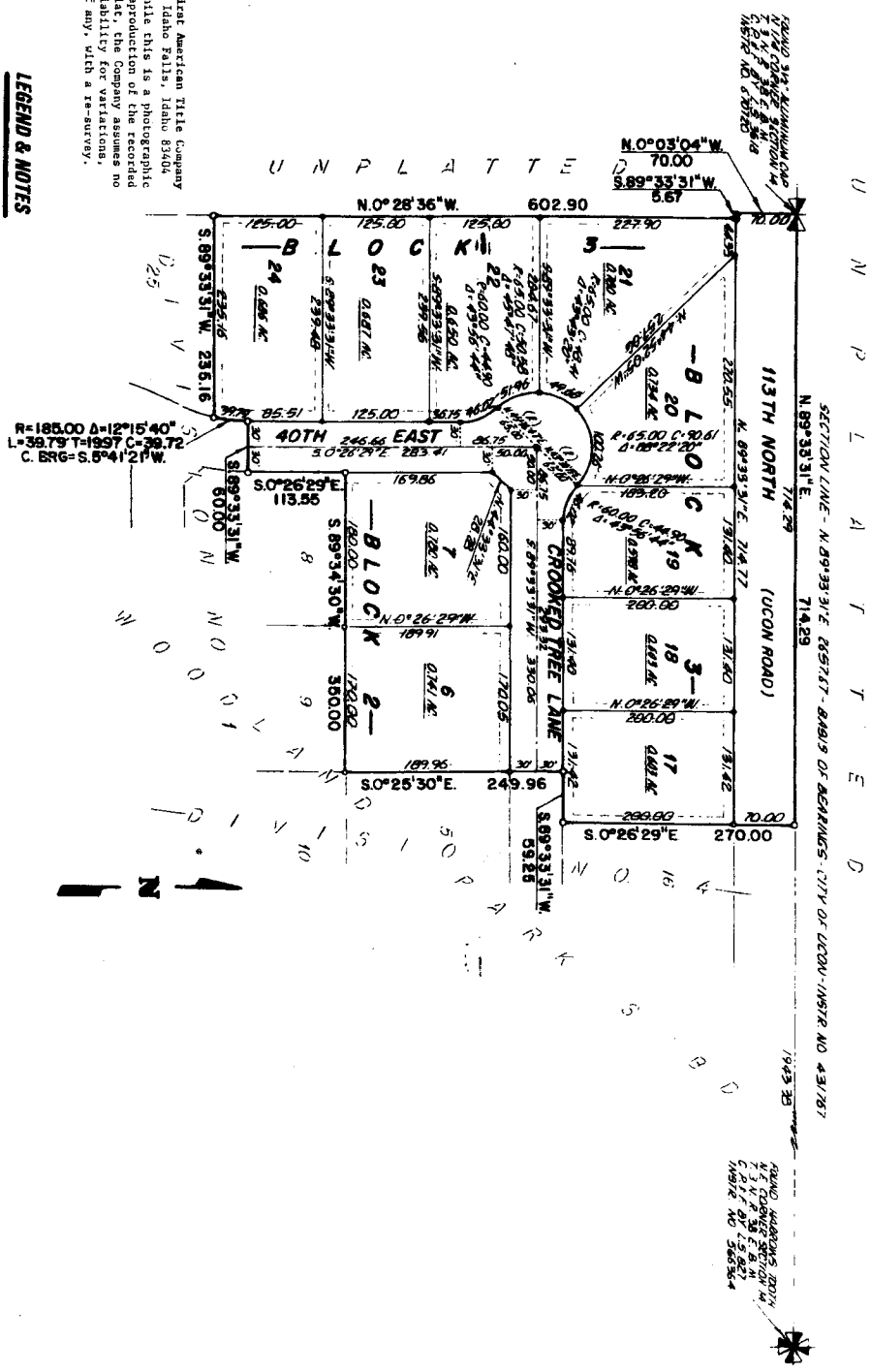


WOODLAND PARK SUBDIVISION, DIVISION NO. 5 AN ADDITION TO THE CITY OF UCON, BONNEVILLE COUNTY, IDAHO BEING PART OF THE NW 1/4 NE 1/4 SECTION 14 T 3 N. R. 38 E. 4 M.

RECORD TO ADD OWNERS NAMES AND EASEMENTS



LEGEND & NOTES

- 5/8" 1.37" Steel roller set with plastic cap stamped L.S. 8/795
- 1/2" 1.24" Steel roller set with plastic cap stamped L.S. 8/795
- 5/8" Steel roller found with caps stamped L.S. 8/795
- 1/2" Steel roller found with caps stamped L.S. 8/795

First American Title Company
 Idaho Falls, Idaho 83404
 While this is a photographic
 reproduction of the recorded
 plat of the Company assumes no
 liability for variations,
 if any, with a 1:50000.

1/16ths have been Public Examiners to verify recording being of said plat and right first
 and public utility easements are retained along all sides and rear lot lines except as shown.

1/16ths shall have the right to install, maintain, and operate their easements along and under
 ground and all other utility facilities within the plat. Utility easements shown on this plat may
 be necessary or desirable in providing utility services within and without the lots described
 herein. The utility easements are shown on this plat for the purpose of providing utility services
 within and without the lots described herein. The utility easements are shown on this plat
 only for the purpose of providing utility services within and without the lots described herein.
 The utility easements are shown on this plat for the purpose of providing utility services
 within and without the lots described herein. The utility easements are shown on this plat
 only for the purpose of providing utility services within and without the lots described herein.
 The utility easements are shown on this plat for the purpose of providing utility services
 within and without the lots described herein. The utility easements are shown on this plat
 only for the purpose of providing utility services within and without the lots described herein.

R=185.00 A=12°15'40"
 L=39.73 T=18.97 C=38.72
 C. 69°-5.5°41'21"W

BOUNDARY
 1/4 NE 1/4 SECTION 14
 T 3 N. R. 38 E. 4 M.
 C. P. 17. 81. 5. 8. 21
 1/16TH 5. 8. 30. 4