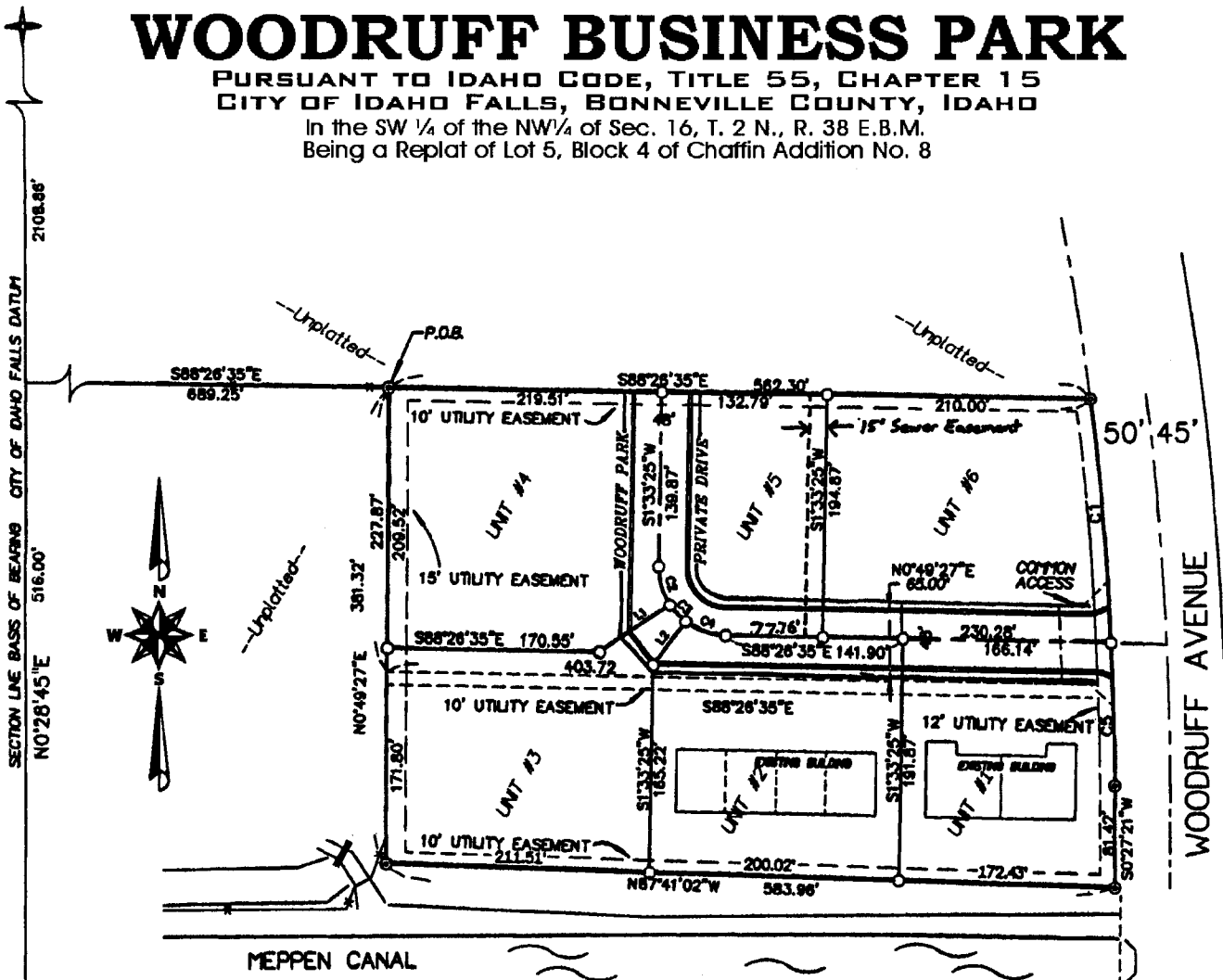


WOODRUFF BUSINESS PARK

PURSUANT TO IDAHO CODE, TITLE 55, CHAPTER 15
CITY OF IDAHO FALLS, BONNEVILLE COUNTY, IDAHO

In the SW 1/4 of the NW 1/4 of Sec. 16, T. 2 N., R. 38 E.B.M.
Being a Replat of Lot 5, Block 4 of Chaffin Addition No. 8



WEST 1/4 CORNER
SEC. 16 T.2 N., R.38 E.B.M.
(INST NO. 500675)

First American Title Company
Idaho falls, Idaho 83404
This sketch is made solely for the purpose of assisting in locating the premises. The company assumes no liability for alleged loss or damage which may result from reliance on this map.

