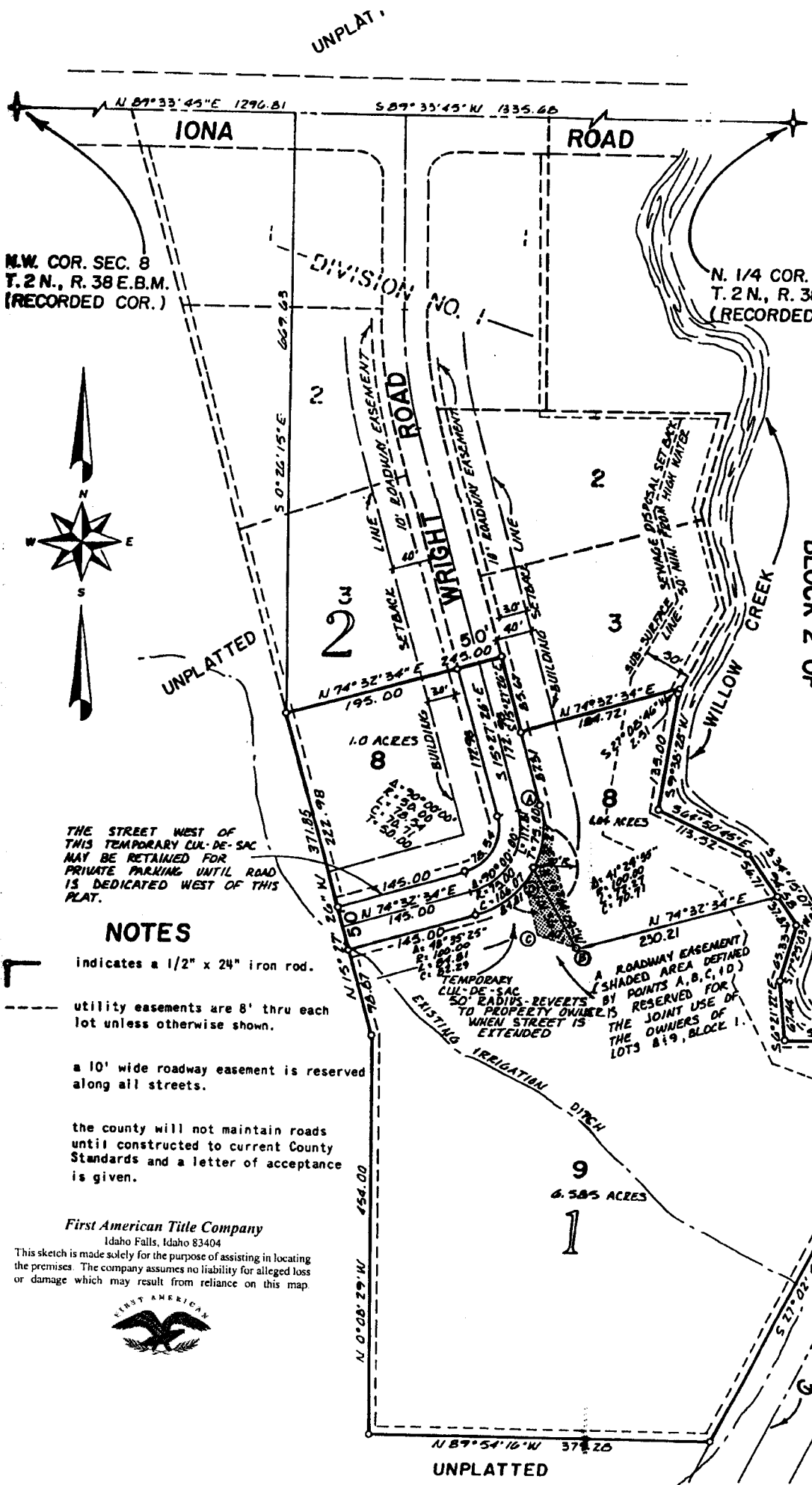


WRIGHT INDUSTRIAL PARK

DIVISION NO. 1
BONNEVILLE COUNTY, IDAHO

PART OF
THE NORTHWEST 1/4 OF SECTION 8,
T.2N., R.38 E.B.M.

THE FIRST AMENDED PLAT OF
LOTS 4 THRU 7 BLOCK 1 AND LOTS 4 THRU 7
BLOCK 2 OF



N.W. COR. SEC. 8
T.2N., R.38 E.B.M.
(RECORDED COR.)

N. 1/4 COR. SEC. 8
T.2N., R.38 E.B.M.
(RECORDED COR.)



THE STREET WEST OF THIS TEMPORARY CUL-DE-SAC MAY BE RETAINED FOR PRIVATE PARKING UNTIL ROAD IS DEDICATED WEST OF THIS PLAT.

NOTES

- └┘ indicates a 1/2" x 24" iron rod.
- utility easements are 8' thru each lot unless otherwise shown.
- a 10' wide roadway easement is reserved along all streets.
- the county will not maintain roads until constructed to current County Standards and a letter of acceptance is given.

First American Title Company
Idaho Falls, Idaho 83404

This sketch is made solely for the purpose of assisting in locating the premises. The company assumes no liability for alleged loss or damage which may result from reliance on this map.



UNPLATTED