

# WYCOFF ADDITION

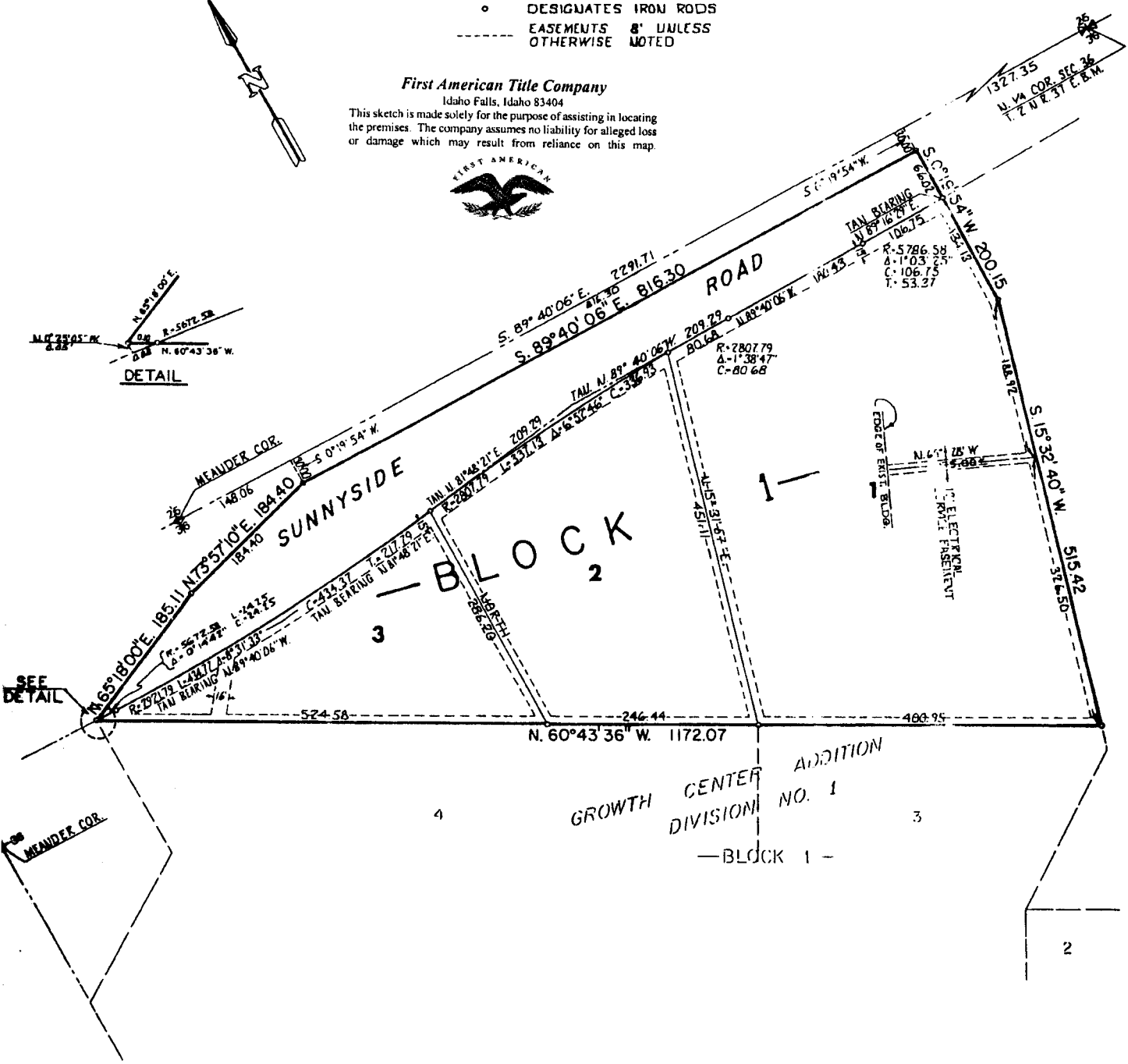
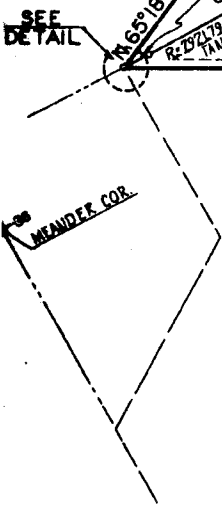
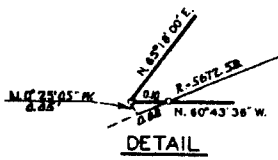
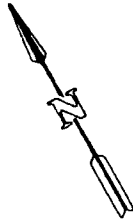
A PORTION OF THE CITY OF IDAHO FALLS  
 BONNEVILLE COUNTY, IDAHO  
 A PORTION OF SEC. 36 T. 2 N. R. 37 E. S. 10 M.

o DESIGNATES IRON RODS  
 - - - - - EASEMENTS 8' UNLESS  
 OTHERWISE NOTED

**First American Title Company**

Idaho Falls, Idaho 83404

This sketch is made solely for the purpose of assisting in locating the premises. The company assumes no liability for alleged loss or damage which may result from reliance on this map.



GROWTH CENTER  
 DIVISION NO. 1  
 - BLOCK 1 -