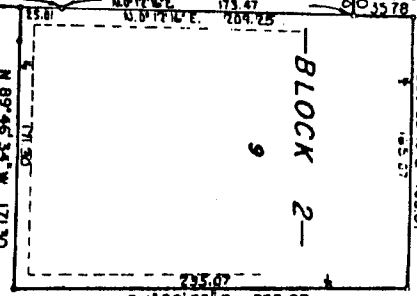
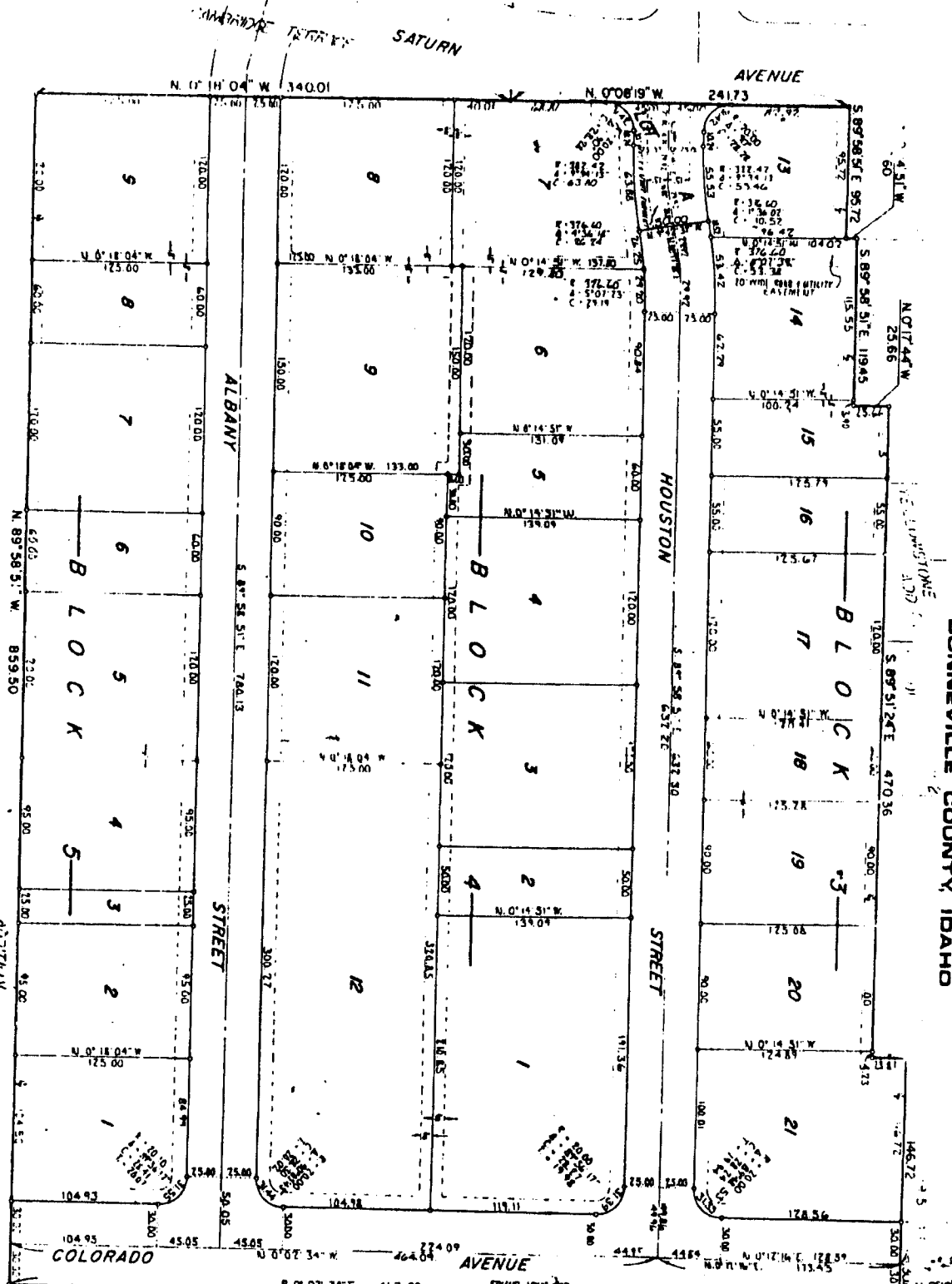


A PORTION OF THE NE 1/4 NW 1/4
 SEC 24 T 2 N, R. 37 E, B.M.

WELLSBORO ADDITION

DIVISION NO. 2

BONNEVILLE COUNTY, IDAHO



INTERSTATE HWY NO. 15

8° 02' 34\"/>

POITEVIN ADDITION
 BLOCK 2

1
 2
 3

ADOTTS
 0
 1
 2
 3
 4

First American Tile Company
 Idaho Falls, Idaho 83404

This sketch is made solely for the purpose of assisting in locating the premises. The company assumes no liability for alleged loss or damage which may result from reliance on this map.

