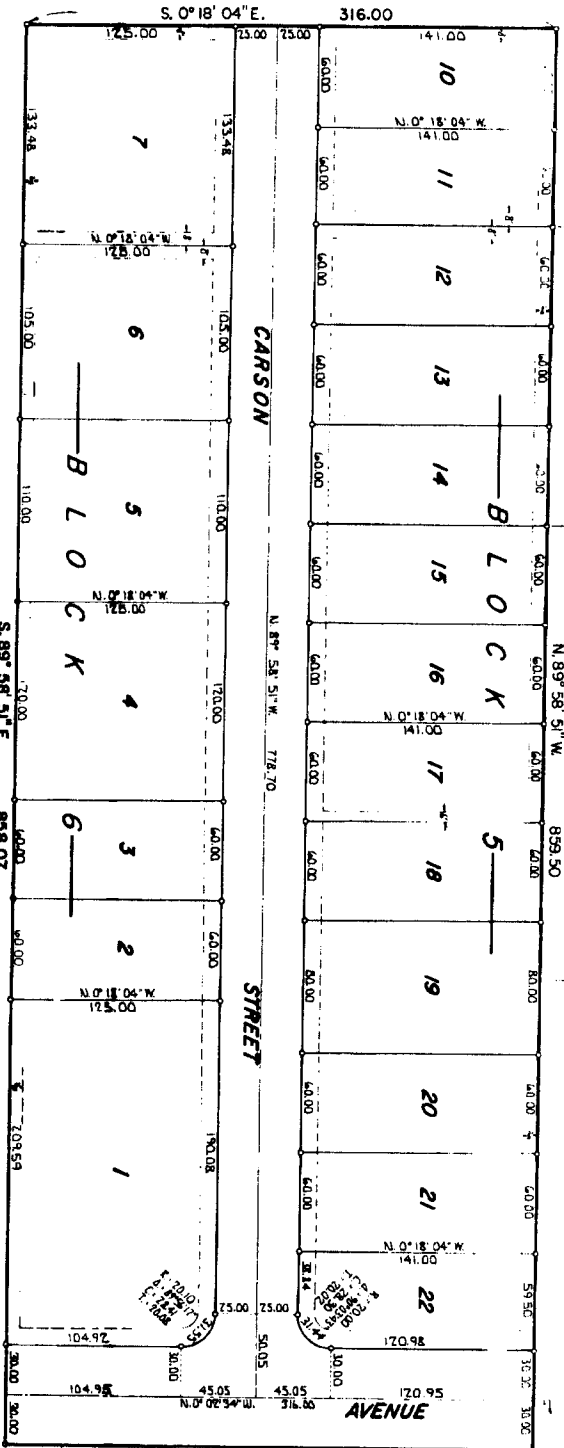


A PORTION OF THE E 1/2 NW 1/4 SECTION 24 T. 2 N. R. 37 E. B.M.

YELLOWSTONE ADDITION

DIVISION NO. 4

BONNEVILLE COUNTY, IDAHO



UNPLATTED

This sketch is made solely for the purpose of assisting in locating the premises. The company assumes no liability for alleged loss or damage which may result from reliance on this map.



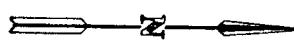
First American Title Company

Idaho Falls, Idaho 83404

N. 0° 02' 34\"/>

ADDITION 6
BLOCK 2

NOTES
 • DISTANCES FROM ROADS
 • YELLOWSTONE ADDITION TO
 STREET DIMENSIONS ARE TO THE
 INSIDE OF CURB



U.S. HWY NO. 15