

YORK ROAD CHURCH ADDITION

DIVISION NO. 1

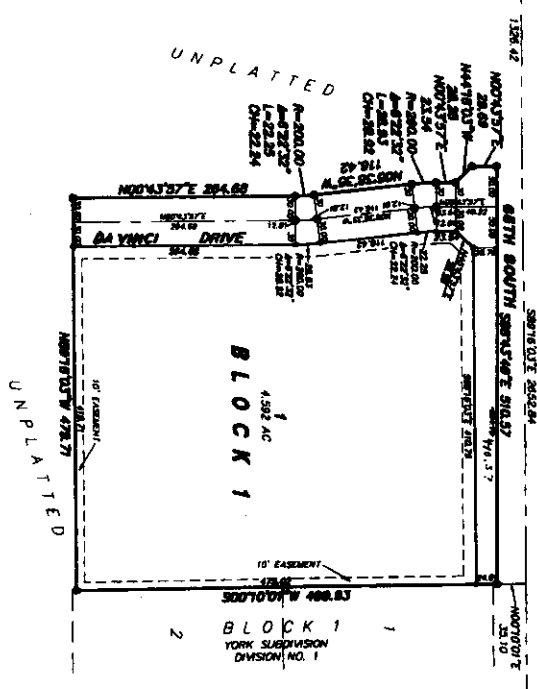
AN ADDITION TO THE CITY OF DAHO FALLS, BONNEVILLE COUNTY, IDAHO

BEING PART OF THE NW 1/4 OF SECTION 12, T14N R37E S4M

FOUND ALUMINUM CAP
1 1/2" COR SECTION 12
CRP 87 L S 790
NSTR. NO. 58453

SECTION 12E (PART OF BEARING)
CITY OF DAHO FALLS PLAT 2004
SECTION 12E

FOUND ALUMINUM CAP
1 1/2" COR SECTION 1
CRP 87 L S 827
NSTR. NO. 58400



LEGEND & NOTES

- 3/4" x 3/4" Steel plate set with public copy stamped L.S. 8798
 - 1/2" x 3/4" Steel plate set with public copy stamped L.S. 8798
 - 1/4" x 3/4" Steel plate set with public copy stamped L.S. 8798
1. Shows not within Public Utility Company's boundary system shown as road boundaries within area set. All other public utility boundaries are as shown.

First American Title Company
 Idaho Falls, Id 83404
 While this is a photographic
 reproduction of the recorded
 plat, the company assumes
 no liability for variations,
 if any, with a re-survey.