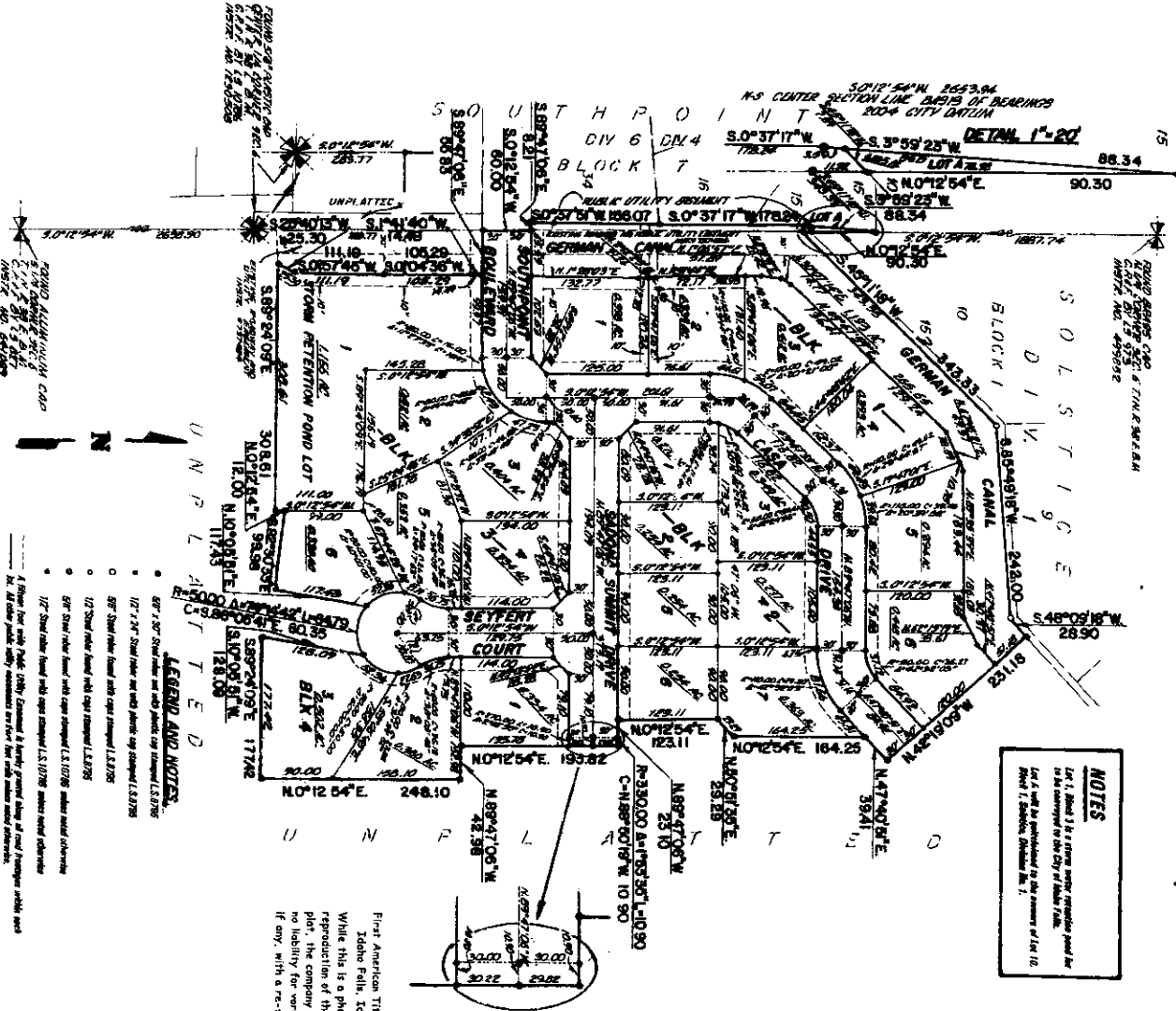


# YORKSIDE SUBDIVISION DIVISION NO. 1

AN ADDITION TO THE CITY OF IDAHO FALLS, BONNEVILLE COUNTY, IDAHO  
BEING PART OF THE S.W. 1/4 N.E. 1/4 SECTION 9, T. 1 N. R. 38 E., B.M.



**NOTES**

1. This plat is a photographic reproduction of the recorded plat and is subject to the terms of the original plat.

2. This plat is published in the name of the City of Idaho Falls, Idaho.

**LEGEND AND NOTES**

- 87° ± 30" Show fence and utility poles, top diameter (L.S. 078)
- 1/2" ± 24" Show fence and utility poles, top diameter (L.S. 078)
- 87° ± 30" Show fence and utility poles, top diameter (L.S. 078)
- 1/2" ± 24" Show fence and utility poles, top diameter (L.S. 078)
- 87° ± 30" Show fence and utility poles, top diameter (L.S. 078)
- 1/2" ± 24" Show fence and utility poles, top diameter (L.S. 078)
- 87° ± 30" Show fence and utility poles, top diameter (L.S. 078)
- 1/2" ± 24" Show fence and utility poles, top diameter (L.S. 078)

First American Title Company  
Idaho Falls, ID 83404

While this is a photographic reproduction of the recorded plat, the company assumes no liability for variations, if any, with a re-survey.